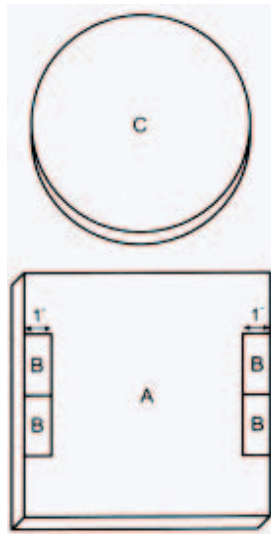


# Teddy Bear Sleepover Cake



## STEP-BY-STEP DIRECTIONS

**PREPARE** and bake 1 package cake mix, your favourite flavour, according to package directions. Use one 9-inch round pan and one 8-inch square pan. Cool completely, before decorating.



**LEAVE** round cake whole; cut square cake as shown in diagram.

**ADD** about 20 drops of brown food colouring to whipped topping. Frost cake and decorate with assorted cookies and candies.